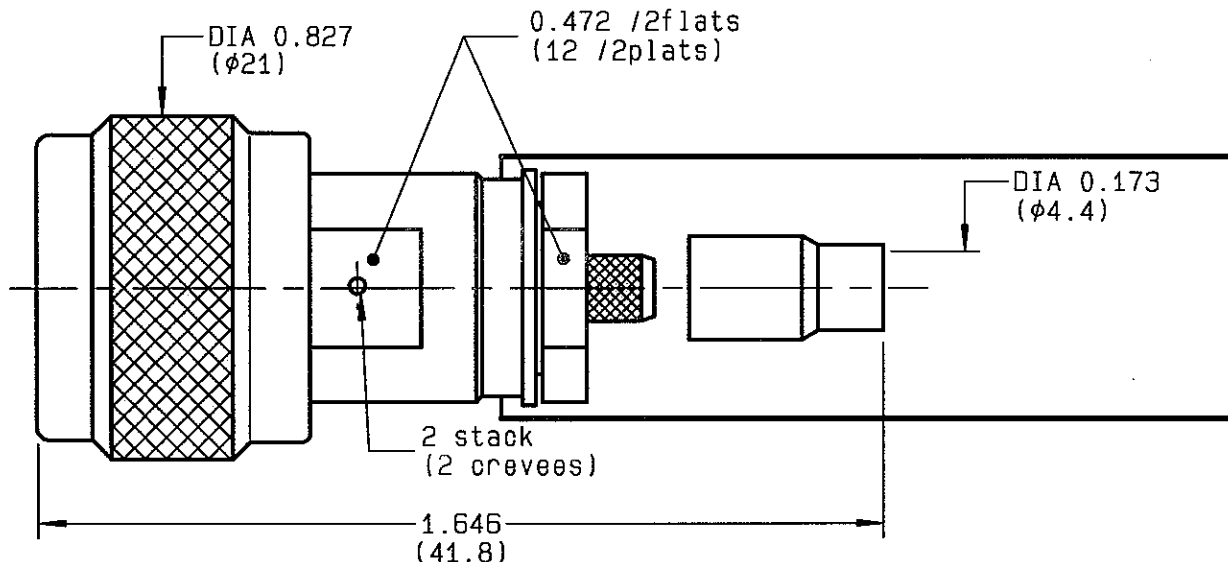


**STRAIGHT PLUG CRIMP TYPE
CABLE 4.13/50**

R161.093.000
SERIES N



NOMINAL IMPEDANCE	50 Ω
FREQUENCY RANGE	0-11 GHz
TEMPERATURE RATING	-55/+155 °C
V.S.W.R	1.15* + x F(GHz)Maxi
RF INSERTION LOSS	.048 √F(GHz) dB Maxi
VOLTAGE RATING	850 Veff Maxi
DIELECTRIC WITHSTANDING VOLTAGE	1500 Veff Mini
INSULATION RESISTANCE	5000 MΩMini
HERMETIC SEAL	NA Atm.cm ³ /s
LEAKAGE (pressurized only)	NA
MECHANICAL DURABILITY	500 Cycles
WEIGHT	36.9 gr
SPECIFICATION	

CABLES :

OTHERS CHARACTERISTICS

CABLE RETENTION	180 N Mini
CENTER CONTACT RETENTION	
Axial force - mating end	27 N Mini
Axial force - opposite end	27 N Mini
Torque	NA cm.N Mini
RECOMMENDED TORQUES	
Mating	130 cm.N
Panel nut	NA cm.N
Clamp nut	370 cm.N

* 0-3 GHz .
LEA 02C0CN6-507 du 14-12-88

CONNECTOR PARTS	MATERIALS	FINISH	(all values are given) in micrometers
BODY	BRASS	BBR 2	
OUTER CONTACT	BRASS	BBR 2	
CENTER CONTACT	BRASS	GOLD 1.3 OVER NICKEL 2	
INSULATOR	PTFE	-	
GASKET	SILICONE RUBBER	-	
OTHERS PIECES	BRASS	BBR 2	

ISSUE

CREATION DATE

FILE PART-NUMBER

9815K00

09-MAR-94

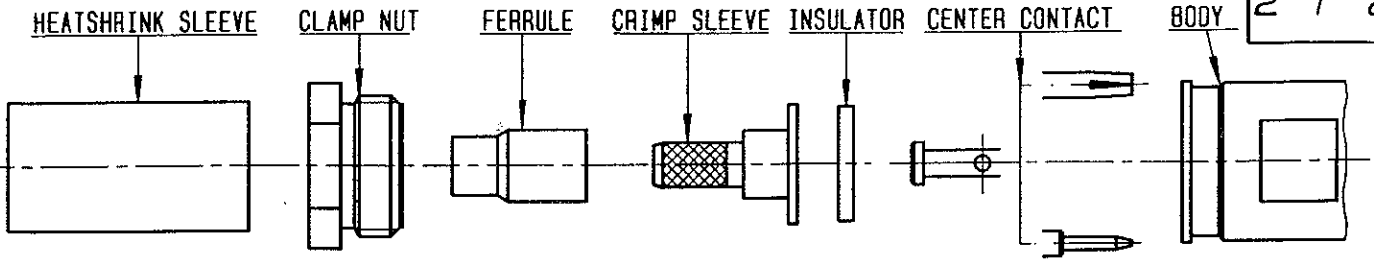
EPC 96-07



RADIALL®

The information given here is subject to change without notice.
Design changes may be in order to improve the product .

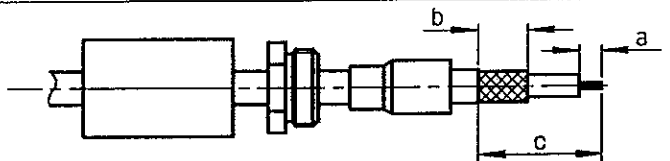
Connect to the future



①

Slide onto the cable the heatshrink ,
the clamp nut and the ferrule .
Strip the cable .

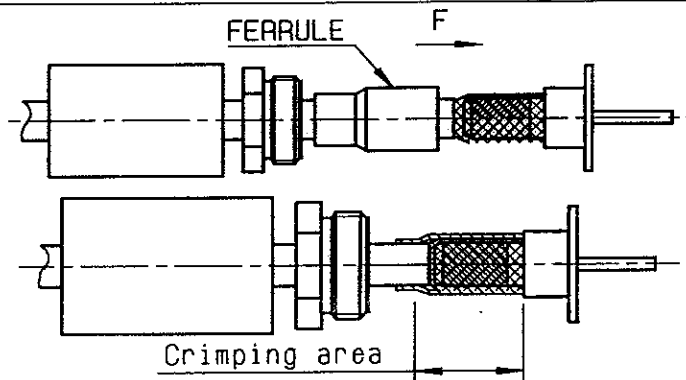
NOTA : For FILECA cable 1703/93
remove sheet metal strip .



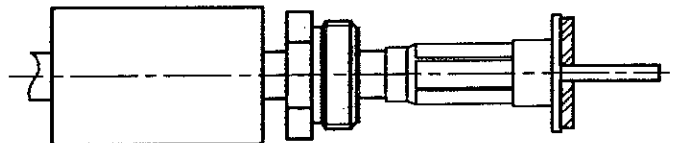
Cable	Stripping	a	b	c
FILECA	inch	0.354	0.394	0.945
	mm	9	10	24
FILOTEX	inch	0.354	0.315	0.866
	mm	9	8	22

②

Slide the crimp sleeve under the braid .
Slide ferrule over the braid against
crimp sleeve . (In direction F)
Crimp the ferrule with crimping tool
R282 223 000 (Hex. :5.41) (last reference
crimping tool R282 216) or
crimping tool R282 293 000 (M22520/5-01)
+ dies R282 235 011 (M22520/5-11) or
dies M22520/5-05 (R282 246) .

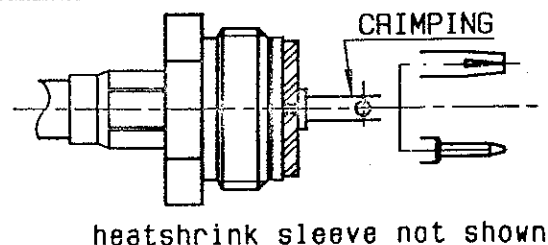


Cut the dielectric flush to crimp sleeve .
Mount insulator against crimp sleeve .



④

Slide the centre contact onto the cable
inner conductor against insulator .
Crimp centre contact .
Crimping tool M22520/1-01 (R282 291)
position 7 + positioner M22520/1-13
(R282 997) red turret .



⑤

Screw sub-assembly into the connector
body .
(recommended coupling torque 32.74 in.lb)
Slide sleeve over ferrule and heatshrink
sleeve in place .

